

ALUMINIUM

BI-FOLD DOORS

3 PANEL & 4 PANEL

Smart System aluminium bi-fold doors use a frame in which moveable parts are placed in such a way that it is possible to fold up the doors to the left or right.



- hinged to fold
- roller support to the top & bottom
- slides perfectly to open
- Internally Beaded
- Security Locking
- *Wider designs and colours available*



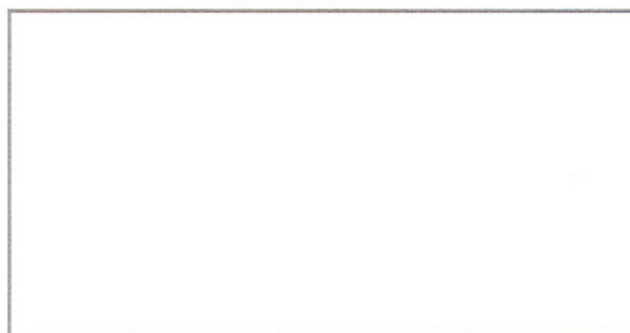
FULL
RANGE
OF

ALUMINIUM WINDOWS, SHOP FRONTS & CURTAIN WALLING

available in 10 standard Colours
with dual internal and external colour options

- **CASEMENT WINDOWS** direct fix with the option of up to 2 sq. metre top hung opener
- **OPEN IN WINDOWS, PIVOT, TILT & TURN and STEEL LOOK**
- **PATIO DOORS**
50% opening possible or with a triple track 75% opening
- **SHOP FRONTS & LOW RISE CURTAIN WALLING**

The Smart Aluminium System
is available from



The thermally broken folding door system is designed to allow for maximum thoroughfare through an opening.

The system is built up using a frame in which moveable parts or elements are placed in such a way that it is possible to fold up the elements to the left or right. These elements or sashes are supported and hinged to a mullion. At the bottom the mullion is supported by a roller mechanism which slides along the cill profile while at the top, the mullion is guided by another roller mechanism. There are many possible combinations of elements and opening sashes.



sliding folding door



Features

- Polyamide Thermal Break for superior insulation
- Security locking on main doors and intermediate stiles
- Maximum sash weight up to 80 kgs
- High performance weathering
- Internally beaded
- Virtually maintenance free

Options

- Opening inside or outside of building
- Accommodates glazing from 6mm to 38mm units and panels
- Choice between standard cill or low cill profile allowing levelling of frame with floor
- Accommodates many styles and opening options
- Single or dual colour finishes
- Slides left or right in opening

APPLICATIONS

This series of folding doors is mostly used in hotels and restaurants, stores and in private houses, in order to open a complete wall to create a larger space in the summer. The system is also interesting for conservatories to use as a screen you can open completely in summertimes.

MATERIALS

Aluminium: AlMgSi 0.5 Type 6060/6063 T5 in condition F22 (according to NBN P21-001 and DIN 7863, TV 110, NFP 85301, ISO 3994. Tested and approved according to an artificial ageing test of "Plexi glass" combined with vulcanised rubber.

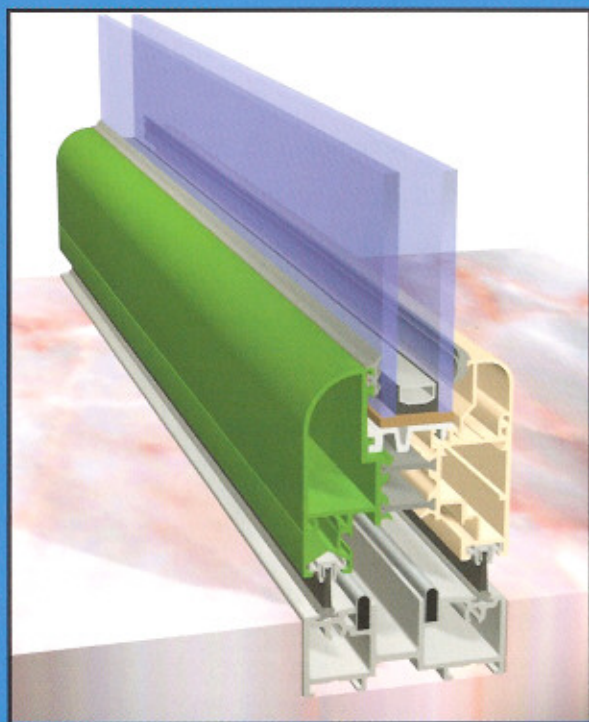
Co-extruded profiles: according to DIN 7863, TV 110, BFP 85301, ISO 3994, tested and approved according to an artificial ageing test of "Plexi glass" combined with vulcanised rubber.

Thermal break: polyamide strips PA 6.6.25% reinforced with glass fibre.

FINISHING

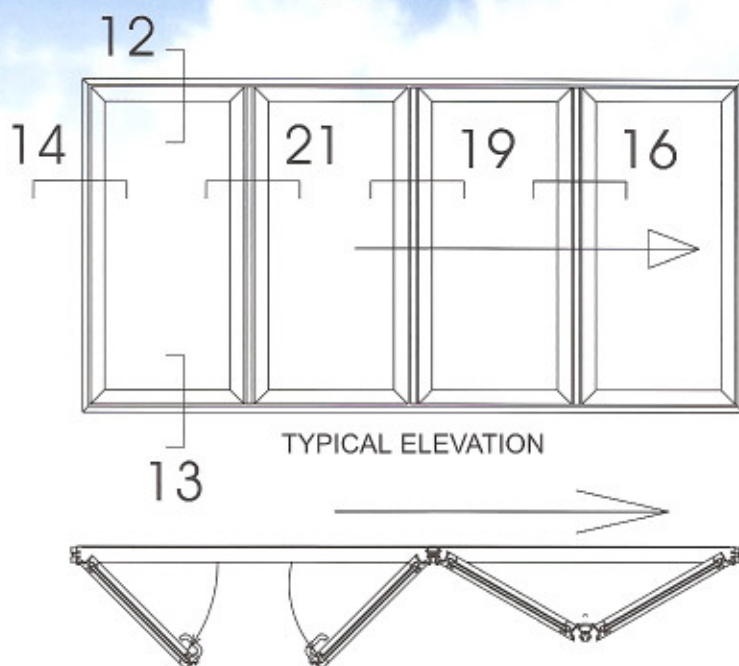
Electrostatic Powder coating: according to the guidelines of A.P.A.- Qualicoat in most of the current RAL- colours. The composed profiles (with thermal break) can be coated with different inner and outer colours (Dual Colour). Anodisation in satin or bronze colours with EWAA/EURAS- Qualinod quality label.

Also available in woodstructure finish to imitate different woodstructures (Powder coated according to Qualicoat standards)



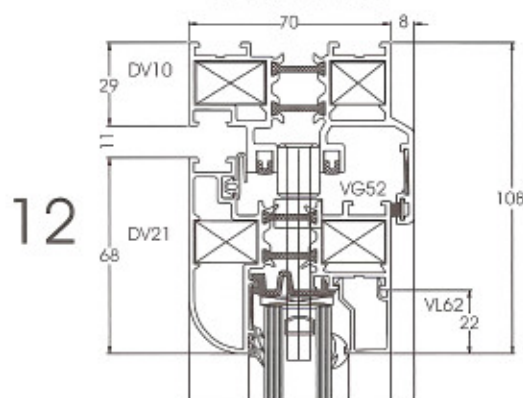
sliding folding

Type 4e

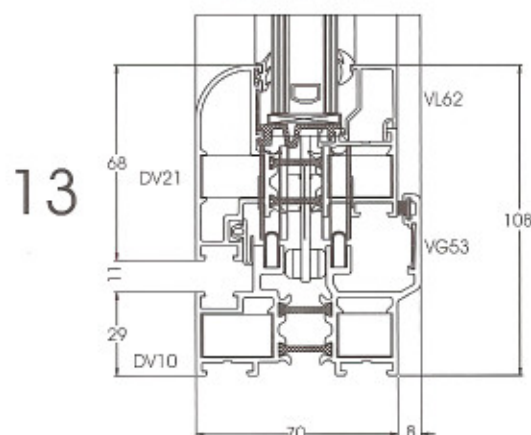


TYPICAL ELEVATION

HEAD DETAIL



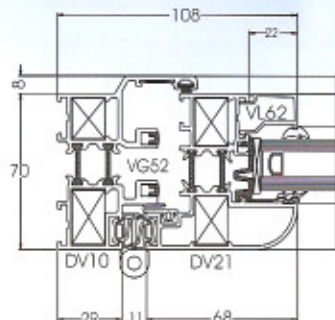
CILL DETAIL



door system

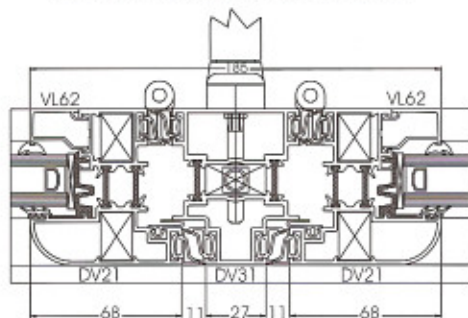
JAMB DETAIL

14



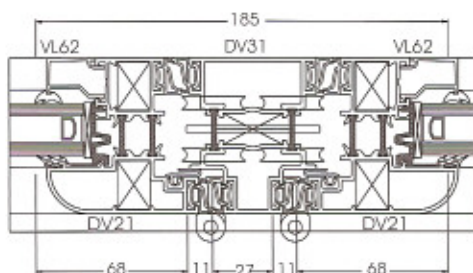
FLOATING MULLION DETAIL

16



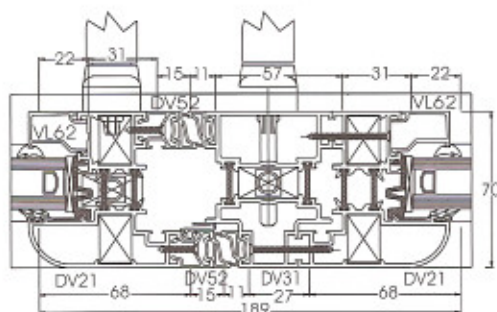
SLIDING MULLION DETAIL

19



MEETING STILE DETAIL

21



THERMAL BREAK

The profiles consist of 2 aluminium extrusions which are separated from one another by polyamide strips PA 6.6.25 reinforced with glass fibre. A gluing thread, rolled and pushed in together with the thermal break profile ensures a strong adhesion after melting and flowing, when the profiles are heated in the hardening furnace.

PERFORMANCE LEVEL

According to STS 52.0

| | |
|--------------------------------|-----|
| Air transmission: | PA2 |
| Mechanical resistance to wind: | PV2 |
| Watertightness | PE2 |

According to STS 52.0

| | |
|--------------------------------|-----|
| Air transmission: | PA2 |
| Mechanical resistance to wind: | PV2 |
| Watertightness | PE2 |

DETAILS

Built-in depth: outer frame 78mm, sash 70mm

Sealings: with extruded E.P.D.M. rubbers and PP brushes

Glazing: from 6 to 38 mm



smart
SYSTEMS